



Blenheim Palace to Open all Year

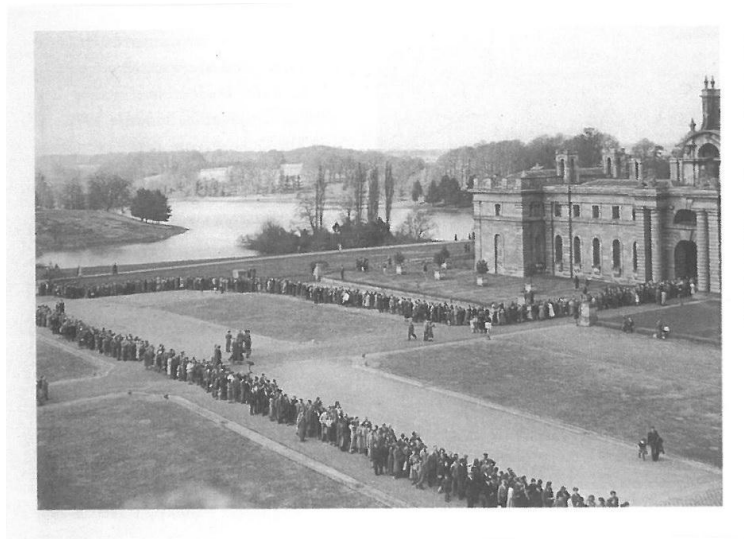
Blenheim Palace has announced that it is set to open all year round, excluding Christmas Day, from 2016. Since opening to the public on 1st April 1950 Blenheim Palace has opened on a seasonal basis, closing for the winter to allow for staff to undertake the annual deep clean.

However next year, from its opening on 13th February, Blenheim Palace will remain open to the public all year.

Chief Executive, John Hoy, says: “I am pleased to announce that Blenheim Palace is extending its opening season to all year round from 2016. It will give our visitors an exciting opportunity to enjoy the Palace throughout the festive season and allow us to add new events and winter activities to our calendar.”

The annual deep clean of Blenheim Palace will continue during January and early February as usual offering visitors an interesting chance to see how the House Manager Kate Ballenger and her team repair, restore and protect the exquisite interiors and artworks inside the Palace.

The decision to open Blenheim Palace to visitors in 1950 was made by the 10th Duke of Marlborough. His Grace chose to open up his family home, which has been the ancestral seat of the Duke of Marlborough for 300 years, in order to raise funds for its upkeep, restoration and future preservation.



The 12th Duke of Marlborough is pleased to continue the legacy of his Grandfather and to extend the opening season, sharing his home with visitors during the frosty months.

ENDS

For more information please contact:

Melodie Manners | melodie@flamingo-marketing.co.uk | 01637 873379 or 07815 70954