

STEP INTO THE COTSWOLDS WALK ONE

Chipping Norton to Over Norton



Summary

An easy walk of 2.5 miles across gently undulating countryside from the market town of Chipping Norton to Over Norton and back to Chipping Norton.

This walk is part of a visitor payback scheme called 'Step into the Cotswolds' and has these waymarkers along the route. →

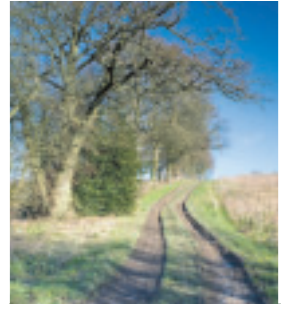


Walk information

Start/End Point:	The Crown & Cushion Hotel, High Street, Chipping Norton
Grid Reference:	SP314272 (this route can be found on Ordnance Survey Explorer Map 191 - Banbury, Bicester & Chipping Norton)
Distance:	2.5 miles
Terrain:	Gently undulating
Parking:	New Street Car Park (long stay) - off the A44 just west of the town centre
Public Transport:	Details of bus services can be found in the 'Explore the Cotswolds by Public Transport' leaflets produced by and available from the Cotswolds Conservation Board (Tel: 01451 862000). You can download leaflets from: www.cotswoldsaonb.org.uk They are also available at most Visitor Information Centres and libraries.
Public toilets:	New Street Car Park or Chipping Norton Town Hall
Refreshments:	Numerous pubs, restaurants and cafes in Chipping Norton



© Crown copyright - All rights reserved (100040971) 2007.



eventually cross it when you go under the old brick bridge. Exit the woods via the kissing gate and bear right along the edge of the open meadow.

3 You will soon reach another kissing gate. Go through and turn left up the hill towards Over Norton.

4 At the top of the hill in Over Norton, cross over into Cleeves Corner and follow the tarmac restricted byway signed 'Salford 1 3/4'. The tarmac will soon become gravel and then sweep right into farm buildings. At the bend, head straight on along the narrower track.

5 You will eventually reach a wide open junction with a track on the left. Do not turn left yet, proceed straight on and you will soon reach a boundary between two other fields. Turn left and head up the slope along the left edge of the top field. Pass through the kissing gate at the top and down the other side.

6 When you reach the tarmac road cross over and walk through the gate. Continue with the small residential development to your left and through the gap at the end. Cross over the narrow road and through the gate ahead. Proceed down the slope towards the bridge visible at the bottom. Cross over the bridge and head straight up the other side to the kissing gate.

7 Go through the kissing gate and you will enter the recreation ground. In the far left corner you will see the tower of St Mary's Church. Head in that direction and exit the recreation ground via the kissing gate.

8 Turn left on the tarmac access road and immediately right onto the wide gravel footpath and back into St Mary's churchyard. Walk through the churchyard and exit onto Church Street.

9 Walk up Church Street, past the Chequer's pub and the Blue Boar pub to the High Street. Cross over the High Street to the Crown and Cushion Hotel.

Route description

1 From the Crown and Cushion Hotel on Chipping Norton High Street, cross over the street, bear right and then turn immediately left down Goddards Lane with the Blue Boar pub on your right hand side. Walk past the Chequer's pub, cross over into Church Street and walk down into St Mary's churchyard.

2 As soon as you enter the churchyard, turn right and walk along the footpath at the perimeter. Exit through the white post barrier and continue straight ahead with house on left and walk down the private drive until you reach a field gate, with a kissing gate to the right. Walk through this kissing gate and onto the wooded footpath. Continue along this footpath and you will see the River Cleaves over to your left and

This walk is part of a visitor payback scheme called Step into the Cotswolds and has these waymarkers along the route. →





The Cotswolds Area of Outstanding Natural Beauty (AONB)

The Cotswolds is considered by many people to be one of the most beautiful areas of England - the quintessential English landscape. It is also a very special area: one of only 40 Areas of Outstanding Natural Beauty (AONBs) in England and Wales, it is protected by Government as being of great value to the nation. This ensures the very features that attract people are there for future generations to enjoy.

The natural qualities of the AONB are unique. Limestone gives the Cotswolds its distinctive, unified appearance, visible everywhere in buildings and walls, whole towns and villages, which subtly blend with their surroundings.

The Cotswolds is a place of immense diversity: rolling landscapes with breathtaking views and open skies contrast with intimate valleys, villages and pastures. Ancient beech woodlands, rare flora and limestone grasslands alternate with broad swathes of arable fields. Pre-historic hill forts are found close to the fine craftsmanship of manor houses and stone cottages.

'Step into the Cotswolds' & the Cotswolds Conservation Board

This walk, and others in the series, has been funded through money raised by the 'Step into the Cotswolds' Visitor Payback Scheme, where visitors make voluntary donations to local access and conservation projects.

The scheme is run by the Cotswolds Conservation Board in partnership with West Oxfordshire District Council and supported by Oxfordshire County Council's Countryside Service. For more information about the Visitor Payback Scheme, the Cotswolds Area of Outstanding Natural Beauty and the work of the Cotswolds Conservation Board contact:

Cotswolds Conservation Board

Fosse Way
Northleach
Gloucestershire GL54 3JH
Tel: 01451 862000
Fax: 01451 862001
Website: www.cotswoldsaonb.org.uk

